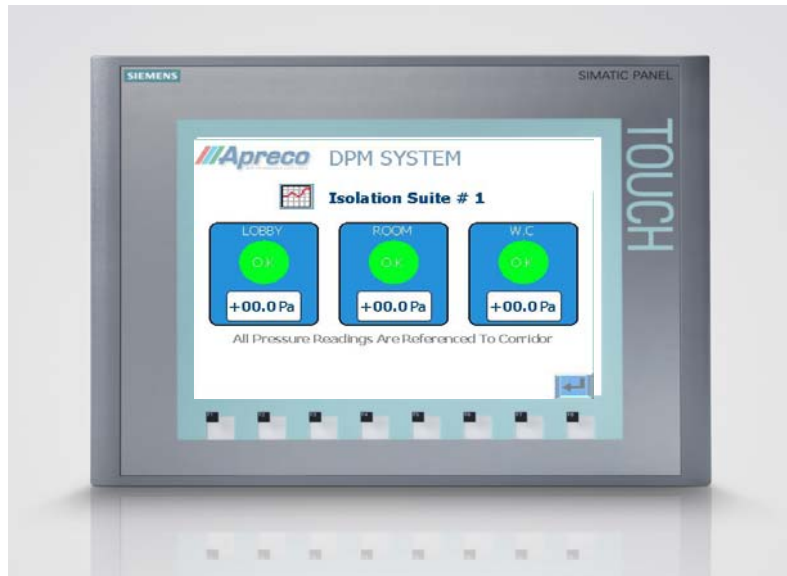


Pressure Monitoring

Apreco's DPM system provides an effective means of monitoring the differential pressures held within clean areas. The operator interface is kept as simple as possible to minimise staff involvement, thus allowing staff to concentrate on their work, whilst the DPM monitoring system looks after the working environment.



Features

- Continuous Monitoring.
- Multi-channel capacity.
- Adjustable alarm limits and alarm delay periods.
- Alarm auto-reset.
- Wall-mounted touch screen, HMI.
- High quality pressure transmitters.

Benefits

- Automatic monitoring of pressures.
- Ideal for the smaller facility as it can be controlled and operated by site personnel without the need for specialist operators.
- Overview screen makes interrogation simple.

DPM Systems General Information

Installation

Each system is supplied in kit form which is easily installed by competent engineers. Apreco can provide you with a quotation for installation if required.

The system consists of a main HMI interface module, and all related cabling and pressure hoses as detailed in the 'specification' selection.

Full installation and operating instructions are included with each system kit.

Operation

Through the touch display screen, each sensor channel can be set to alarm at a specific set point at time of commissioning.

The display screen gives quick visual indication as to which area is in an alarm condition. An optional audible warning siren can be supported by the system.

When an alarm has been registered, it remains latched until the differential pressure has been restored in all areas where there has been an alarm condition. The system then auto-acknowledges and returns to normal operation.

Standby Screen



Overview Screen



Suite Screen



Main Screen



Std Enclosure x 1	Size dependant on number of sensors
No. of channels (sensors)	4 to 24
Sensor Range	-50/+50Pa (Standard)
Controller x 1 (including remote display)	Siemens System
Beacon Alarm x 1 (integrated with HMI)	24DC
Pressure Hose	Red PVC 5x8 (50m per channel)
Sensor Plates	One per channel
Mains Supply	230vac switched & fused

Additions

The system has the ability to monitor other parameters including Relative Humidity, Temperature and other enviromental sensors.

Data logging can be provided as an option function.

The information contained within this data sheet is subject to change due to continuing research and development.